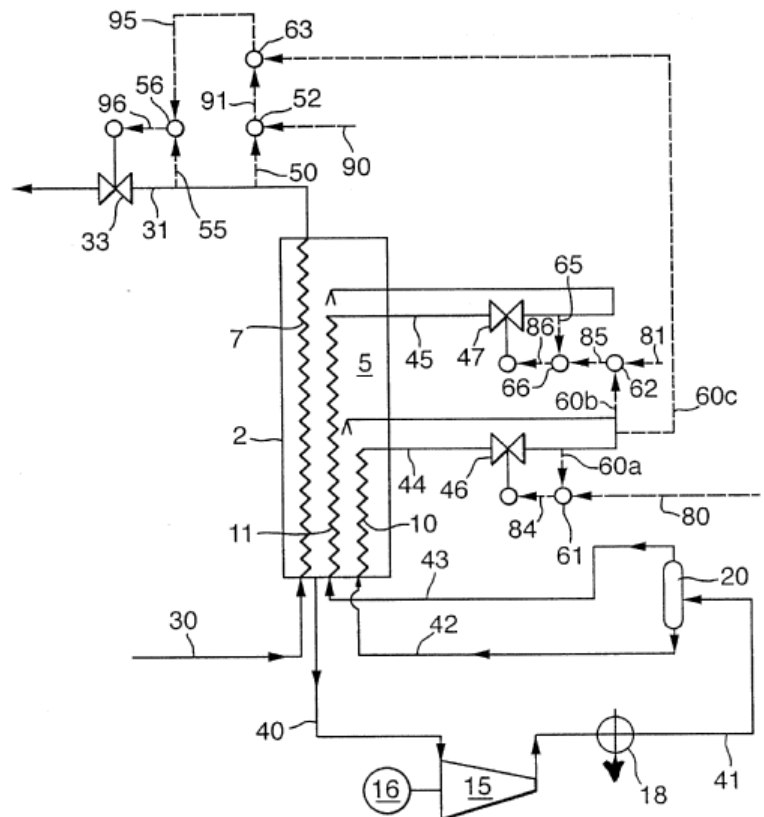


[12] Patent

<p>[11] Patent No.: GC 0000279</p> <p>[45] Date of Publishing the Grant of the Patent: 01/11/2006 6/2006</p>	<p>Number of the Decision to Grant the Patent: 6/739</p> <p>Date of the Decision to Grant the Patent: 29/05/2006</p>
<p>[21] Application No.: GCC/P/2001/1304</p> <p>[22] Filing Date: 23/04/2001</p> <p>[30] Priority:</p> <p>[31] Priority No. [32] Priority date [33] State 00201470.2 25/04/2000 EP</p> <p>[72] Inventors: 1- Wiveka Jacoba ELION, 2- Gregory John MCLACHLAN, 3- Jonathan Hamilton WILSON, 4- Keith Anthony JONES</p> <p>[73] Owner: Shell Internationale Research Maatschappij B.V., Carel van Bylandtlaan 30, 2596 HR The Hague, The Netherlands</p> <p>[74] Agent: Suleiman Ibrahim Al-Ammar</p>	<p>[51] Int. Cl.⁷: F25J 1/02</p> <p>[56] Cited Documents:</p> <ul style="list-style-type: none"> - EP 0893665 A (AIR PROD & CHEM) 27 January 1999 - EP 0529307 A (AIR PROD & CHEM) 03 March 1993 - US 4809154 A (NEWTON CHARLES L) 28 February 1989 - US 3929438 A (BAILEY DUNN M et al.) 30 December 1975

[54] CONTROLLING THE PRODUCTION OF A LIQUEFIED NATURAL GAS PRODUCT STREAM

[57] Abstract: Controlling the production of a liquefied natural gas (31) comprises measuring the temperature (50) and the flow rate (55) of the liquefied natural gas (31); maintaining the flow rate of the heavy mixed refrigerant (60a) at an operator manipulated set point (80), and determining the flow rate of the light mixed refrigerant (86) from (i) the flow rate of the heavy mixed refrigerant (80) and (ii) an operator manipulated set point for the ratio of the flow rate of the heavy mixed refrigerant to the flow rate of the light mixed refrigerant (81); determining a dependent set point (91) for the ratio of the flow rate of the liquefied natural gas to the flow rate of the heavy mixed refrigerant such that the temperature (50) of the liquefied natural gas is maintained at an operator manipulated set point (90); determining a dependent set point (95) for the flow rate of the liquefied natural gas (95) from (i) the dependent set point (91) for the ratio of the flow rate of the liquefied natural gas product stream to the flow rate of the heavy mixed refrigerant and (ii) the flow rate of the heavy mixed refrigerant (60c); and maintaining the flow rate of the liquefied natural gas (55a) at its dependent set point (95).



No. of claims: 17

No. of figures: 3